

# Section 6 - Studios and Operations

It is not necessary for applicants to locate studios in all of the key cities served under the contract. However, applicants may locate studios in more than one location, should they consider this desirable in the context of their proposals.

Opt-out programming will be permitted in respect of the news and/or current affairs and/or sport provision of the service. Opt-out programming will not be permitted in the context of other programming elements and will only be facilitated within the number of frequencies allocated for the service.

The BCI's current policy in respect of opt-out advertising will apply to this service i.e. opt-out advertising will only be permitted on the service in the event that it is accompanied by the provision of opt-out studios and opt-out programming (in this case, opt-out news and or current affairs and or sport programming).

In the case of each studio and office location, please provide a detailed plan of the studio area together with an overall plan of the studio and office complex proposed. Please include the following information: -

- i) The proposed location (including the name and address) and total floor area available. In cases where it is proposed to locate on a number of floors or in separate buildings, please specify the floor area of each section.

Wilton Radio Ltd has a vision of creating a radio broadcasting centre of excellence in Galway city. Galway is the only centre outside of Dublin where there exists national media with TG4 and Radio na nGaeltachta both operating in the county. With a large educated talent base available, satellite companies have sprung up to support both these institutions and other world leading media companies have grown as a result. It's most recent success story is that of Wilton Radio shareholder Paul Cummins and his audio visual company Telegael, winning for the second time on 14th June 2007 another prestigious Emmy award. An incredible achievement, showcasing Irish creativity on the world stage and all produced in the West of Ireland.

We believe that this license is a unique opportunity for the broadcasting sector in Ireland to locate such a large operation outside of Dublin, adding further investment to an already buoyant media industry in that area.

Wilton Radio Ltd has an 8,000 sq ft facility in Galway where I Radio Ltd (North West) will broadcast from. It is our intention to house both the North West youth station and the multi city station in our headquarters at Unit 4, Ballybrit Business Park, Ballybrit, Galway.

Wilton Radio Ltd is committed to operating 3 stand alone radio services, one housed in Athlone and two under one roof in Galway. No shortcuts, no reduction in headcounts but two distinct and well resourced radio services focused on two separate target audiences. They may share the occasional paperclip however there are major benefits both to Wilton Radio Ltd and to the broadcasting sector in Ireland by providing people the opportunity to have a career in media that could only up to now be sought in Dublin.

As stated in the programming section of this document, our ambition is to recruit the most familiar and popular broadcasters on radio in Ireland to present our key day time programmes. As a number of these individuals are resident in Dublin, we propose locating a broadcasting facility that will



accommodate all the needs and requirements of the part of our programming team which will be based in Dublin. For the purposes of this application we have identified a premises in the Park West Business Park however, should we be successful it is our intention to identify a similar sized premises in the city centre which gives ease of access for our programming and on air team and visiting guests. Our business plan reflects the cost of locating the premises in the centre of Dublin.

- ii) A description of the proposed building including details of its construction, age of building, permitted classes of use, level of access to people with disabilities and why in the applicant's view it is suitable for use as a radio studio and/or office location.

The construction will commence on the building early 2008 and will be completed in July 2008.

Our Ballybrit premises in Galway are directly situated off the Galway city ring road. The commercial development is 5 years old and is an ideal location for a new radio station. The building has 3 floors, our group will occupy the middle and top floor. The building is constructed from pre cast concrete with a timber truss roof. The building is timber framed with high ceilings.

The building will have full access for people with disabilities including car parking facilities. The building also has a lift and toilets for people with disabilities.

- iii) A detailed drawing that includes the dimensions of the proposed studios, technical facilities, news, office and administration areas. In particular, details of the manner by which it is proposed to construct the studios, together with details of the acoustic treatment are required.
- iv) Outlines of the proposed heating, ventilation and standby power plant should also be provided and where such equipment is to be located.
- v) The security mechanisms proposed to guard against unauthorised access to the on-air studio.

#### **Facility Content**

The radio station will operate from our Galway base and studio facilities in Dublin.

The following studios will be installed in the Galway base:

1. Studio 1 – main on-air use
2. News – news reading live to air

The facility is shared with i Radio Ltd. Production and spare on-air studio capacity will be provided by the existing facility.

The common equipment racks room will contain all transmission, processing, monitoring, outside source collection and studio pc equipment.

In addition a studio facility will be provided in Dublin, at Unit 3D2, Block 17, The Plaza, Park West Business Park, Nanagor Road, Dublin 12.

The Dublin facility will include one main on-air studio which will include interview facilities, one news studio and a control room which will be used whenever a presenter does not wish to operate the studio themselves.

### Method of Construction and Acoustic Treatment

The studios will be constructed using methods which will ensure mean sound isolation between rooms of 55dB/A. This construction will normally consist of triple-leaf walls comprising multiple layers separated by heavy acoustic panels; if partitions coincide with structural walls a triple layer will be used, with the central leaf integral with the structure. The internal walls of the studio will be mounted on a resilient foundation, and the floor of the studio is carried on a long-fibre type mineral wool blanket which reduces floor-borne vibrations.

Double-layer, 15mm plasterboard with staggered joints will be used to clad the partitions, with exposed faces plastered.

Internal wall surfaces are studded and filled with sound-absorbing compacted mineral wool, faced with treated hardboard perforated in a manner that will allow tailored absorption across the audio frequency spectrum. Wall coverings are fire-retardant hessian with ash trim.

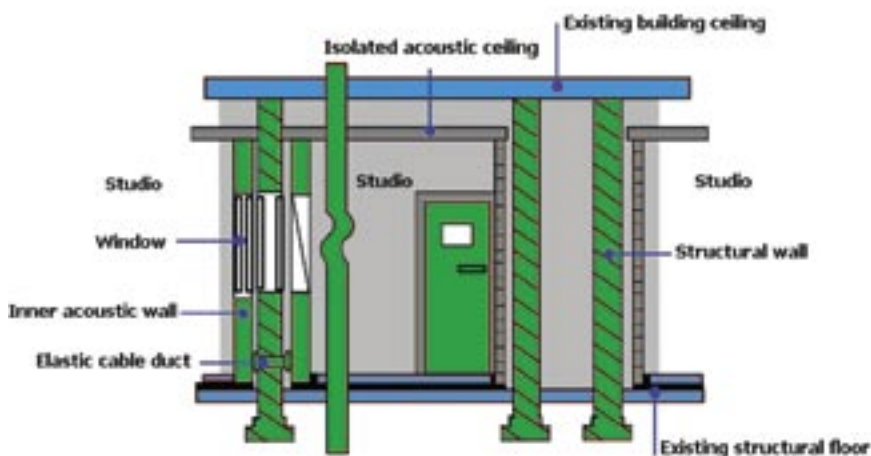
Studios will be fitted with suspended acoustic ceilings and internal roofs isolated from the building's existing structures.

Cable trays will be fitted in the space above the acoustic ceilings and drops made inside partitions using ducts with elastic joints.

This design will produce rooms whose acoustic characteristics conform to NR28, with a maximum reverberation time of 0.3 seconds from 250Hz upwards, with permitted increase at lower frequencies to a maximum of 0.44 seconds at 63Hz.

Observation windows will be triple glazed in accordance with the number of wall leaves, with substantial air spaces between the panes and acoustic absorbing material on the reveals.

### Design features of studio construction



**Doors** are of solid construction in accordance with building fire regulations; acoustic isolation will be attained by fitting magnetic seals and rising thresholds. Doorframes will be constructed so as not to include any bridges between the leaves of the walls in which they are mounted.

**Entrance** to the studios is provided via a sound lock, with a high isolation door at its entrance and into each studio, and acoustic absorbing treatment on its interior surfaces.

**Ventilation ducts** are fitted above the acoustic ceilings, fed via elastic suspensions to exterior plant, which provide climate control including heating, cooling and humidity control as required. With special consideration to noise isolation, acoustic baffles are incorporated in the ducting.

The building is fitted with an **auto-start generator** and uninterruptible power supply with associated transfer panel. Mission critical equipment is also protected by Uninterruptible Power Supplies.

Throughout the studio complex, **studio furniture** is constructed of Ash with acoustic inlays. The layout has been designed with at least 900mm space surrounding the furniture to allow disabled persons' access, and the worktop heights are between 750 and 850mm as recommended for wheelchair users, in accordance with Part M of the NDA Guidelines.

The toilet block to accommodate disabled persons is located on the ground floor.

**Access** to the studio block is controlled by a secure door, with electronic 'keyfob' lock.

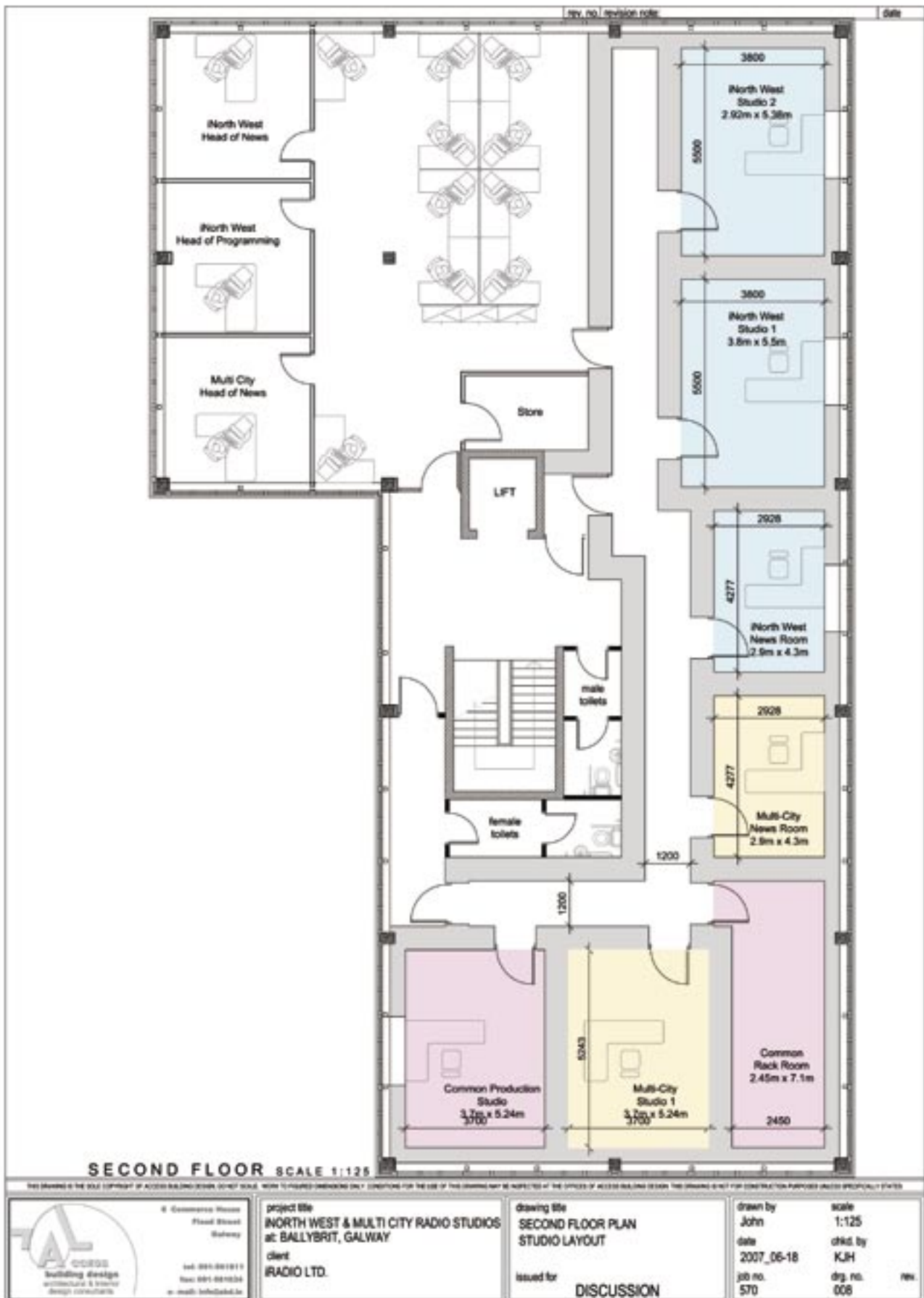
An **additional fire exit** is provided from the studio block, consisting of an acoustic door with internal release bars.

All studios and office areas comply with relevant building regulations particularly in regard to **disabled persons' access**.

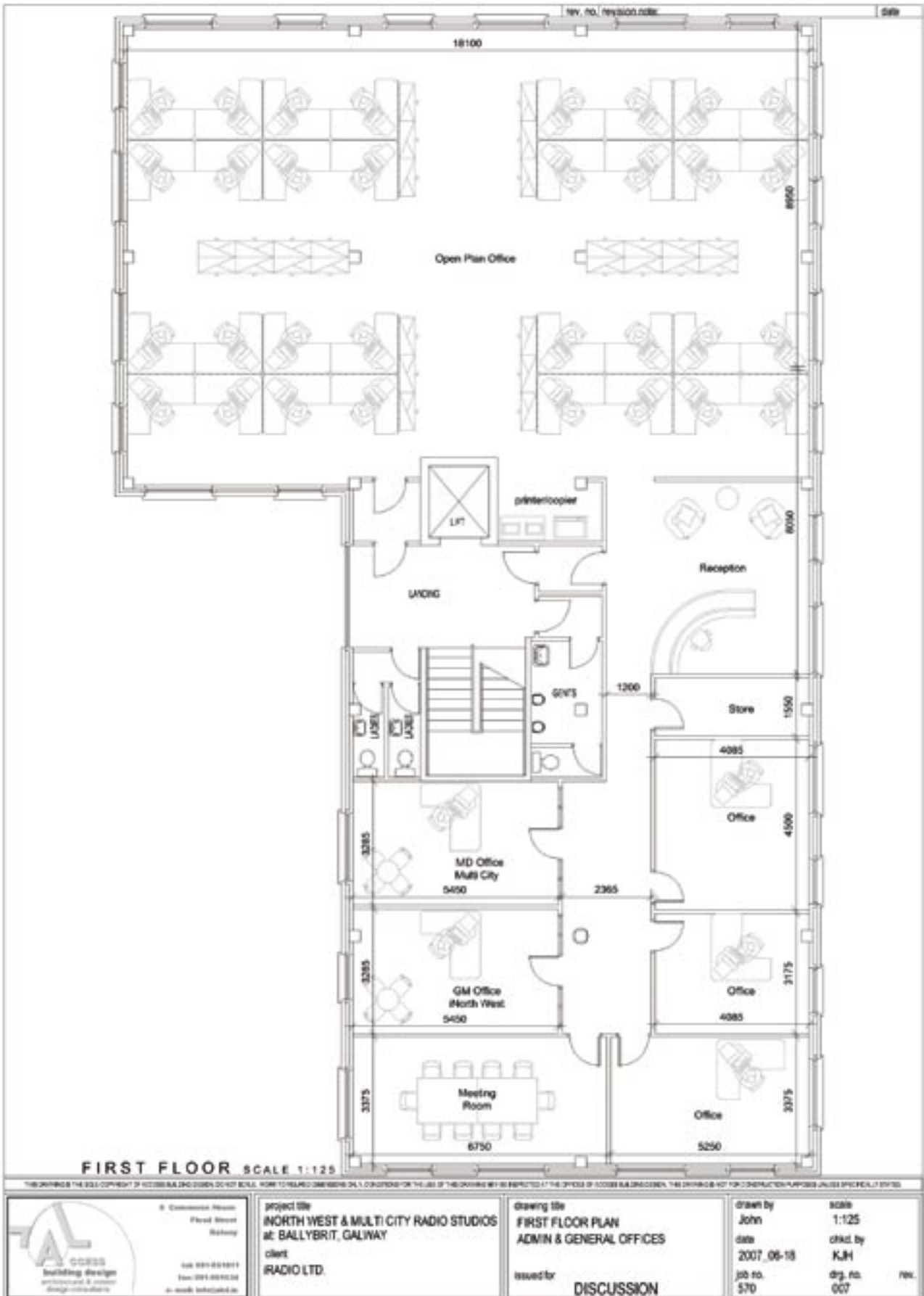
See drawings on following pages for studio floor plans in Galway and Dublin.

The studio drawings for Galway identify the dedicated Multi City studios, dedicated i Radio North West studios and the facilities which will be shared namely the Rack room and the commercial production studio.

# Galway Studio Complex



# Galway Office Complex





- vi) Please provide a list, including costs, of the principal technical equipment that is to be installed, together with available test and deviation limiting equipment.

## Galway On Air

	Technical Equipment	qty	€	€
1.	Mixing desk, Klotz Digital Aeon-12	1	21784	21784
2.	Furniture, custom acoustic	1	4900	4900
3.	Presenter microphone, Shure SM-7B	1	579	579
4.	Guest microphones, Shure SM-7B	2	579	1158
5.	Headphones, Beyer DT100	3	145	435
6.	CD Player, Denon DN-CD635	2	599	1198
7.	Microphone stands and PC monitor arms	3	533	1599
8.	Monitor speakers, with amplifiers	1	732	732
9.	Digital Distribution amplifier	1	448	448
10.	Monitor speaker brackets	1	250	250
11.	Red lights and switcher	1	560	560
12.	Installation sundries, hardware	1	2350	2350
<b>Equipment Capital</b>				<b>35,993</b>

## Galway News

	Technical Equipment	qty	€	€
1.	Mixing desk, Klotz Digital Xenon-6	1	6800	6800
2.	Microphones, Shure SM-7B	2	579	1158
3.	Headphones, DT100	2	145	290
4.	Telephone hybrid, D&R Hybrid-2	1	550	550
5.	pair monitor speakers inc amplifiers	1	732	732
6.	Digital Distribution amplifier	1	448	448
7.	speaker mounting brackets	1	240	240
8.	Installation sundries/hardware	1	1980	1980
9.	Red lights and controller	1	560	560
10.	Mic and PC monitor mountings	2	533	1066
<b>Equipment Capital</b>				<b>13,824</b>

## Galway - Technical Equipment Room

	Technical Equipment	qty	€	€
1.	Distribution amplifiers	4	349	1396
2.	Equipment racks	2	600	1200
3.	ISDN codec	2	4750	9500
4.	Studio telephone system	1	4650	4650
5.	Krone field	1	1250	1250
6.	Audio processor, Optimod-FM 8500	1	16450	16450
7.	Backup audio processor, Optimod-FM 2300	1	5115	5115
8.	Synchronised master clock system (2 studios)	1	2875	2875
9.	Receivers, Sony STS-E700	1	240	240
10.	Transmission router and talkback master	1	2350	2350
11.	PC-based logger	1	5800	5800
12.	Talkback stations	2	595	1190
13.	Digital/Analogue converters	4	523	2092
14.	Tieline Codec (for OBs, remotes etc)	1	4367	4367
15.	Tieline portable codec	1	5984	5984
16.	Portable hard disk recorders for reporters	2	651	1302
17.	Hand-held reporter's mics	2	168	336
18.	Headsets for sports reporters and news workstations	2	240	480
19.	News workstations	2	2590	5180
20.	Telephone hybrids for news workstations	2	463	926
21.	Web streaming PC w/processor and codec	1	3100	3100
22.	PC for studio internet/text messaging etc	2	1100	2200
<b>Equipment Capital</b>				<b>77,983</b>

## Dublin On Air

	Technical Equipment	qty	€	€
1.	Mixing desk, Klotz Digital Aeon-12	1	21784	21784
2.	Furniture, custom acoustic	1	4900	4900
3.	Presenter microphone, Shure SM-7B	1	579	579
4.	Guest microphones, Shure SM-7B	2	579	1158
5.	Headphones, Beyer DT100	3	145	435
6.	CD Player, Denon DN-CD635	2	599	1198
7.	Microphone stands and PC monitor arms	3	533	1599
8.	Monitor speakers, with amplifiers	1	732	732
9.	Digital Distribution amplifier	1	448	448
10.	Monitor speaker brackets	1	250	250
11.	Red lights and switcher	1	560	560
12.	Installation sundries, hardware	1	2350	2350
<b>Equipment Capital</b>				<b>35,993.00</b>

## Dublin Control Room

	Technical Equipment	qty	€	€
1.	Mixing desk, Klotz Digital Aeon-12	1	21784	21784
2.	Furniture, custom acoustic	1	4900	4900
3.	Presenter microphone, Shure SM-7B	1	579	579
4.	Headphones, Beyer DT100	1	145	145
5.	CD Player, Denon DN-CD635	2	599	1198
6.	Microphone stands and PC monitor arms	1	533	533
7.	Monitor speakers, with amplifiers	1	732	732
8.	Digital Distribution amplifier	1	448	448
9.	Monitor speaker brackets	1	250	250
10.	Red lights and switcher	1	560	560
11.	Installation sundries, hardware	1	2350	2350
<b>Equipment Capital</b>				<b>33,479</b>

## Dublin News

	Technical Equipment	qty	€	€
1.	Mixing desk, Klotz Digital Xenon-6	1	6800	6800
2.	Microphones, Shure SM-7B	2	579	1158
3.	Headphones, DT100	2	145	290
4.	Telephone hybrid, D&R Hybrid-2	1	550	550
5.	pair monitor speakers inc amplifiers	1	732	732
6.	Digital Distribution amplifier	1	448	448
7.	speaker mounting brackets	1	240	240
8.	Installation sundries/hardware	1	1980	1980
9.	Red lights and controller	1	560	560
10.	Mic and PC monitor mountings	2	533	1066
<b>Equipment Capital</b>				<b>13,824</b>

## Dublin - Technical Equipment Room

	Technical Equipment	qty	€	€
1.	Distribution amplifiers	2	349	698
2.	Equipment racks	1	600	600
3.	ISDN codec	1	4750	4750
4.	Studio telephone system	1	4650	4650
5.	Krone field	1	720	720
8.	Synchronised master clock system (2 studios)	1	2875	2875
9.	Receivers, Sony STS-E700	1	240	240
13.	Talkback stations	3	595	1785
14.	Digital/Analogue converters	2	523	1046
23.	Web streaming PC w/processor and codec	1	3100	3100
24.	PC for studio internet/text messaging etc	1	1100	1100
<b>Equipment Capital</b>				<b>21,564</b>

## Acoustic Rooms

	qty	€	€
Design, specify and construct 5 no. acoustic studios to relevant specifications (2 additional in Galway, 3 in Dublin)	1	166550	166550
Additional air conditioning for Galway	1	4800	4800
Air conditioning for Dublin	1	7500	7500
<b>Equipment Capital</b>			<b>178,850</b>

## Studio Building Totals

	€
<b>Equipment Capital</b>	<b>411,510</b>
<b>Installation</b>	<b>37,220</b>
<b>Studios Grand Total</b>	<b>448,730</b>

vii) Please provide a list of the itemised costs for building refurbishment, studio construction, office fixtures, fittings and IT.

### IT, Office Fixtures & Fittings, Building Refurb at Launch Date

IT Equipment	€
Fault Tolerant Super Server	14,000
Back Up CPU	4,000
Software	11,950
Laptop Computers	17,500
Desktop Computers	24,225
Printers	5,000
Various - Memory Sticks etc	2,000
Installation	4,500
<b>Office Fixtures &amp; Fittings</b>	<b>50,000</b>
<b>Building Refurbishment</b>	<b>100,000</b>
<b>Total</b>	<b>233,175</b>

viii) In cases where an applicant proposes to use existing studio, office or computer equipment or buildings, please specify the age of the equipment / facilities proposed, the life expectancy of the equipment and the plan to replace and refurbish such equipment / facilities during the lifetime of any new contract, in addition to all of the information requested above.

Not applicable as building / installation is not extant.